

# MONTHLY MEMBERSHIP PROGRESS REPORT

LOCATION GEORGIA

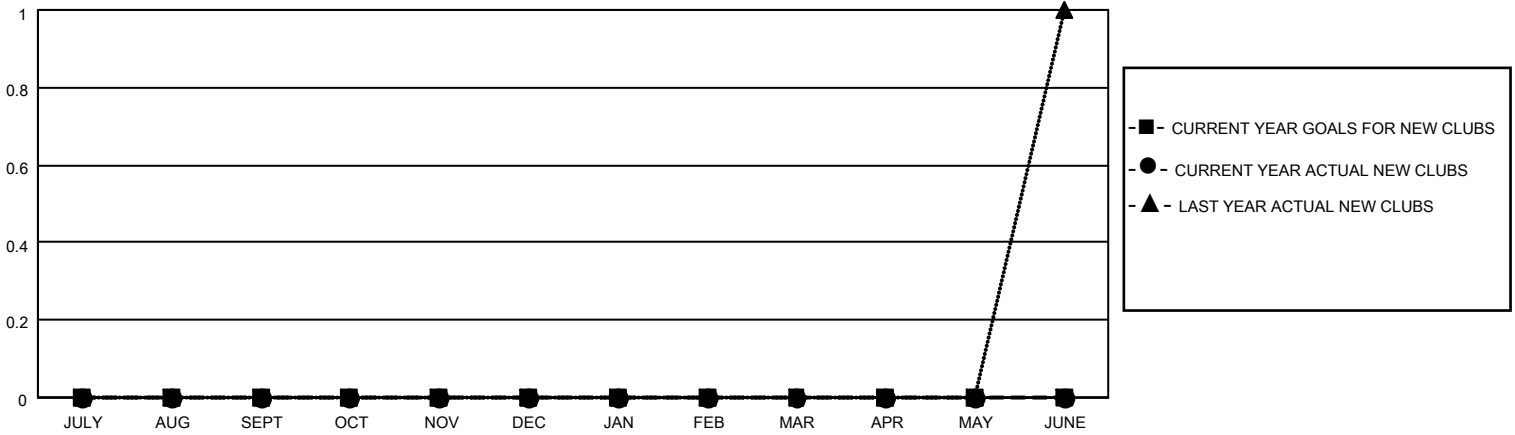
District 18 N

Results as of: 6/30/2023

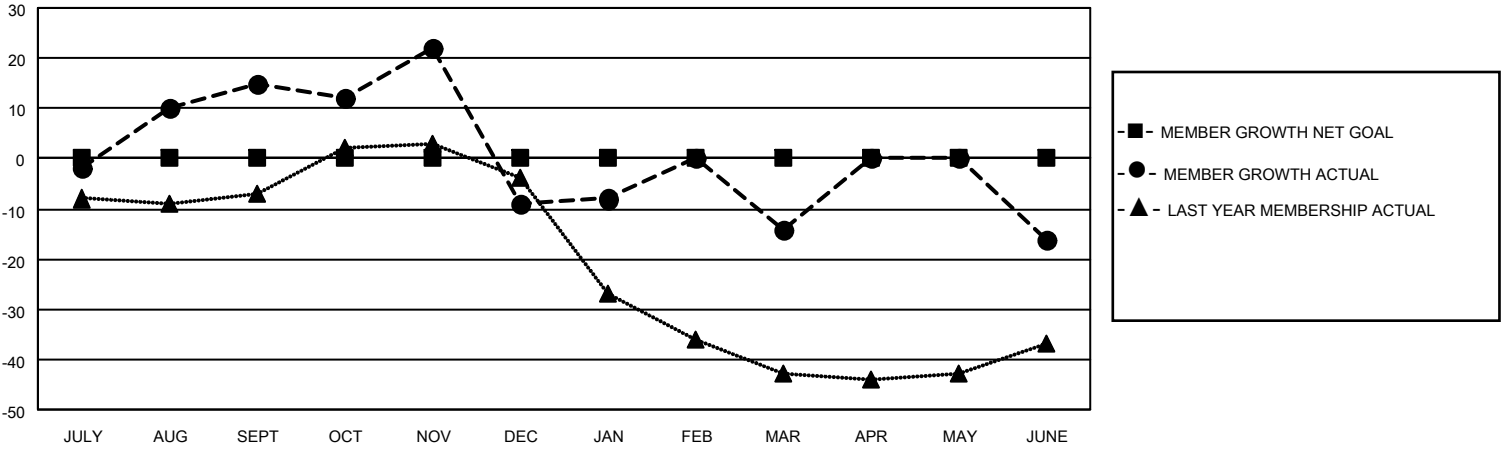
| Clubs                 |               |           |               |
|-----------------------|---------------|-----------|---------------|
| RESULTS FOR 2022-2023 |               |           |               |
| QUARTER               | NEW CLUB GOAL | NEW CLUBS | DROPPED CLUBS |
| JULY/AUG/SEPT         | 0             | 0         | 0             |
| OCT/NOV/DEC           | 0             | 0         | 1             |
| JAN/FEB/MAR           | 0             | 0         | 1             |
| APR/MAY/JUNE          | 0             | 0         | 1             |

| Members               |                        |                      |  |
|-----------------------|------------------------|----------------------|--|
| RESULTS FOR 2022-2023 |                        |                      |  |
| QUARTER               | MEMBER GROWTH NET GOAL | MEMBER GROWTH ACTUAL | DROPPED MEMBERS ACTUAL (including transfers) |
| JULY/AUG/SEPT         | 0                      | 32                   | 15   |
| OCT/NOV/DEC           | 0                      | 16                   | 40   |
| JAN/FEB/MAR           | 0                      | 59                   | 49   |
| APR/MAY/JUNE          | 0                      | 47                   | 49   |

**GOALS AND ACTUAL NEW CLUBS CUMULATIVE**



**GOALS AND ACTUAL MEMBERS CUMULATIVE**



|                        |            |
|------------------------|------------|
| DROPPED CLUBS: 3       |            |
| <b>DROPPED MEMBERS</b> |            |
| DECEASED               | 21         |
| CLUB CANCELLED         | 12         |
| OTHER                  | 120        |
| <b>TOTAL</b>           | <b>153</b> |

31 CLUBS OF 53 ADDED 1 OR MORE NEW MEMBERS

[CLICK HERE FOR CUMULATIVE MEMBERSHIP DATA](#)

| <u>GENDER DISTRIBUTION</u>      |              |
|---------------------------------|--------------|
| MALE                            | 707 (62.73%) |
| FEMALE                          | 420 (37.27%) |
| NON BINARY                      | 0 (0.00%)    |
| PREFER NOT TO ANSWER            | 0 (0.00%)    |
| TOTAL FAMILY UNIT MEMBERS       | 186          |
| FAMILY MEMBERS PAYING HALF DUES | 95           |